

MLS Area LP

Listings	This Month			Year-to-Date		
	Dec 2021	Dec 2020	Change	2021	2020	Change
Single Family Sales	15	10	+50.0%	144	141	+2.1%
Condo/TH Sales	1	--	--	1	--	--
Total Sales	16	10	+60.0%	145	141	+2.8%
New Homes Only	--	--	--	5	5	--
Resale Only	16	10	+60.0%	140	136	+2.9%
Sales Volume	\$4,877,290	\$2,957,400	+64.9%	\$43,557,292	\$34,095,078	+27.8%
New Listings	15	6	+150.0%	168	168	--
Pending	--	--	--	--	--	--
Withdrawn	5	2	+150.0%	21	13	+61.5%
Expired	5	2	+150.0%	21	13	+61.5%
Months of Inventory	3.7	3.0	+91.3%	N/A	N/A	--

Average	This Month			Year-to-Date		
	Dec 2021	Dec 2020	Change	2021	2020	Change
List Price	\$315,631	\$303,190	+4.1%	\$304,390	\$248,544	+22.5%
List Price/SqFt	\$172	\$135	+26.9%	\$219	\$125	+75.6%
Sold Price	\$304,831	\$295,740	+3.1%	\$300,395	\$241,809	+24.2%
Sold Price/SqFt	\$167	\$133	+25.5%	\$222	\$121	+83.3%
Sold Price / Orig LP	97.3%	98.3%	-1.0%	99.2%	97.7%	+1.5%
Days on Market	43	31	+40.4%	29	67	-56.1%

Median	This Month			Year-to-Date		
	Dec 2021	Dec 2020	Change	2021	2020	Change
List Price	\$260,750	\$292,500	-10.9%	\$260,000	\$214,500	+21.2%
List Price/SqFt	\$166	\$137	+21.4%	\$149	\$118	+26.0%
Sold Price	\$258,500	\$292,500	-11.6%	\$257,000	\$205,000	+25.4%
Sold Price/SqFt	\$164	\$131	+25.3%	\$147	\$114	+29.7%
Sold Price / Orig LP	98.1%	100.0%	-1.9%	100.0%	97.8%	+2.3%
Days on Market	37	7	+461.5%	14	39	-64.1%

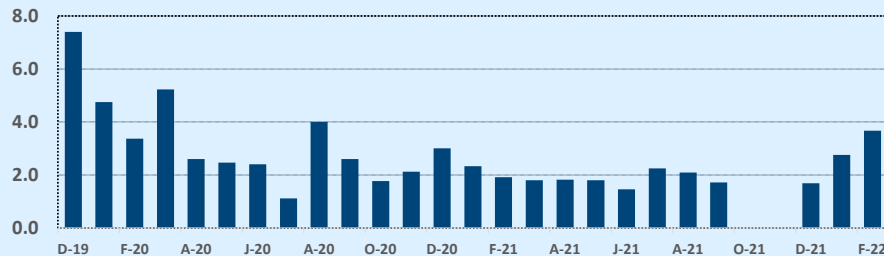
Residential Statistics

Independence Title

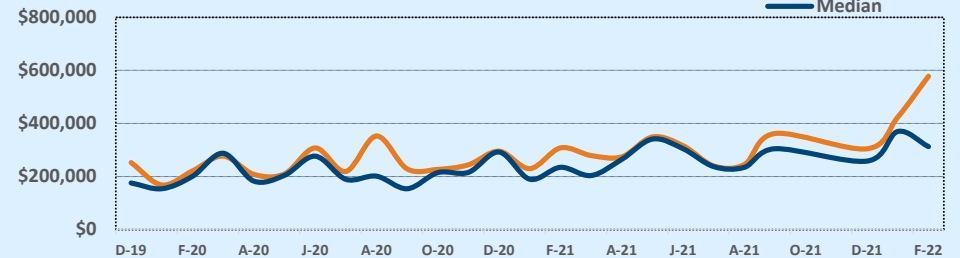
December 2021

Price Range	This Month			Year-to-Date		
	New	Sales	DOM	New	Sales	DOM
\$149,999 or under	1	2	15	11	13	21
\$150,000- \$199,999	2	2	55	25	21	25
\$200,000- \$249,999	2	2	57	30	35	32
\$250,000- \$299,999	4	4	18	27	22	13
\$300,000- \$349,999	2	--	--	11	13	36
\$350,000- \$399,999	1	3	60	11	12	50
\$400,000- \$449,999	--	1	20	10	8	17
\$450,000- \$499,999	--	--	--	6	6	46
\$500,000- \$549,999	1	--	--	5	3	13
\$550,000- \$599,999	--	--	--	10	3	65
\$600,000- \$699,999	1	1	49	9	5	20
\$700,000- \$799,999	1	1	123	8	3	79
\$800,000- \$899,999	--	--	--	1	--	--
\$900,000- \$999,999	--	--	--	2	--	--
\$1M - \$1.99M	--	--	--	2	1	6
\$2M - \$2.99M	--	--	--	--	--	--
\$3M+	--	--	--	--	--	--
Totals	15	16	43	168	145	29

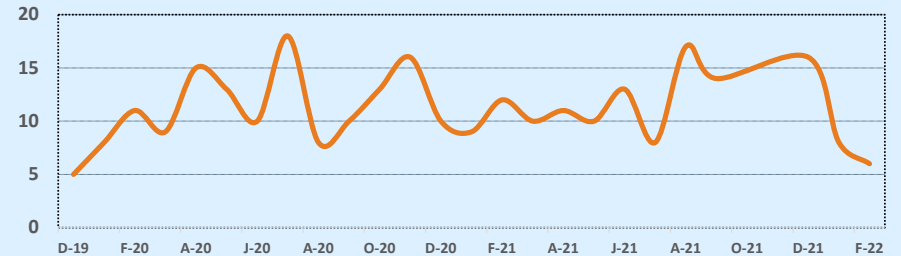
Months of Inventory - Last Two Years



Average & Median Sales Price - Last Two Years



Number of Sales - Last Two Years



Based on information from the Austin Board of REALTORS® (alternatively, from ACTRIS). Neither the Board nor ACTRIS guarantees or is in any way responsible for its accuracy. The Austin Board of REALTORS®, ACTRIS and their affiliates provide the MLS and all content therein "AS IS" and without any warranty, express or implied. Data maintained by the Board or ACTRIS may not reflect all real estate activity in the market.